

# Polymer Valley News

The Newsletter of the Akron Section of the Society of Plastics Engineers  
Our 54<sup>th</sup> Year of Education and Service to the Plastics Industry

## Newsletter Contents

Meeting Announcement	1
Meeting Schedule, Cost	1
President's Message	2
Speaker Biography	3
Meeting Program and Map	4
TopCon 2012 Information	4
TopCon 2012 Call for Papers	5
Advertiser Index	6
Join the Board	6
Akron SPE Past Presidents	6
Highlights of January meeting	7
Technical Questions on Plastics	8
Join the Education Foundation	8
Engineer's Week Banquet	9
Board Meeting Minutes	13
Program for 2011/2012	15
New Directions Initiative	16
Board Meeting Dates	16
Akron Section Board Members	17
PolymerOhio Internships	17
SPE Educational Foundation	18
Who Can Help You at SPE	19
Member Benefits Guide	21
Insertion Order form – 2011/12	23
SPE Membership Application	24

## Costs, Schedules, Reservations

Member and/or guest	\$25.00
Retired	\$25.00
Student	\$20.00

Cash Bar	5:30 p.m.
Buffet Dinner	6:00 p.m.
Program	6:45 p.m.

Reservations must be in by noon on Friday, Feb. 10 and can be made to Gary Casterline at [gcasterline@gmail.com](mailto:gcasterline@gmail.com) or 330-240-2543

## Technical Meeting

**Monday, February 13, 2012**

**5:30 p.m.**

## Joint Meeting with Cleveland Section

## Harry's Steakhouse

5664 Brecksville Road  
Independence, Ohio 44131

## In-Mold Decorating Solutions for Custom Molders

By John Campbell  
Ranger Automation Systems



**Ranger**  
Automation  
Systems Inc.

See page 3 for  
Mr. Campbell's biography  
and page 4 for map and  
presentation information

**Coming Up:**

➤ Board meeting – Feb. 13, 5:00 p.m.,  
Harry's Steakhouse

Feb. 2012, Page 1



## “Education in the U.S. – One size does not fit all!”

Hope your New Year has been good and continues to be prosperous. It is now time to jump into subjects at hand that can help make a difference.

It occurs to me that I now have seen a great deal on STEM and Engineering Education, most recently at the November ACESS Education Banquet. I believe that the younger academic community has switched, after many years of Science/Polymers Technology of "hands on" to a broader field of STEM-based engineering as being the science that allows development and innovation.

What exactly is STEM? Science Technology Engineering and Math (STEM) is the new focus by the academic community for enhancing education in Science and Math in the United States.

I was recently made aware of a society in Washington, DC that addresses the STEM Engineering. They are known as American Society for Engineering Education, or ASEE ([www.asee.org](http://www.asee.org)). The main group associated with this society is, eGFI, which is the communication arm of ASEE. ASEE is committed to promoting and enhancing efforts to improve K-12 STEM and engineering education. It so happens that this communication arm of ASEE got its name from the magazine associated with this society, Engineering Go For It (eGFI) referring to innovation associated with engineering. eGFI puts out a semi-annual newsletter that addresses projects that have been developed in many different engineering disciplines. The eGFI appears to be a major hit with younger academic community students and teachers alike. The site ([www.egfi-k12.org](http://www.egfi-k12.org)) includes an interactive eGFI website, e-newsletters, magazine and other targeted media.

I decided that in order to determine the current status of education in the science and technology field, a review of the past number of years would be appropriate. I was able to find that a group had recently been put together that has assessed this situation. Based on the fact that the STEM movement is fairly new with this recent engineering emphasis. I determined that in order to really understand this educational movement, a previous period of eight years, including the past two years under STEM, was an appropriate timeframe to review. This group, headquartered in Washington, DC as well, is known as Change the Equation (CTEq) ([www.changetheequation.org](http://www.changetheequation.org)) was launched in 2009. It was created to compare States expectations for student performance in Science and Math. This has been determined to be an excellent indicator for measuring proficiency as related to STEM. CTEq is a non-partisan, non-profit CEO led coalition of corporate leaders dedicated to mobilizing the business community to improve the quality of STEM learning in the United States. CTEq is made up of education professionals in teaching assessment along with a contingent from industry that helps bring relevance and reality to learning. This group was formed to help provide a sense of philanthropy and advocacy for initiatives in education and focuses on the masses in the U.S. In December, this group carried out a Conference in which they reviewed recent findings of the surveys. The group was chaired by the CEO of CTEq, and involved speakers relative to assessments in the U.S. along with the Educational Director for Intel. This conference dealt with U.S.-wide Science and Math educational initiatives. The testing of proficiency in these areas was carried out in large cities greater than 250,000 in population, and targeted the proficiency of 4th and 8th graders as they

*Continued ...*



## President's Message

From page 2...

prepare for middle school and high school. It compared these groups in these large cities to other urban areas and rural communities. Furthermore, it has been decided, "It is "crunch time", and the demand for robust skills and knowledge in Science has gone global. It was determined that proficiency from this study appears to have more to do with where you live, and not what you have learned. In addition, it was determined that it is not technology dependent if a states does not have the technology at their fingertips. This group's mantra, "Educate to Innovate", very much fits their focus based on inspired learners, great teaching, and STEM basics. As noted in an article by The Heritage Foundation (*January 2011*), one size does NOT fit all in education.

Based on the review of these websites, recent studies by these various groups, and concerned associations, industry help is most certainly relevant, and needed, to aid in the current educational issues in the U.S. It is important that members of our Section and aligned groups seek support industry-wide for educational funding. ACCESS is very much involved in several aspects of this bigger education picture with programs right here at the local and regional level. In addition, AGPA, also with their aim to help develop Science and Math-based programs and experiments, aids in STEM initiatives.

Please make sure you and your company are aware of any opportunities to help support the education initiatives. As determined, it's "crunch time".

Thank you for your support.

*David Schultz  
SPE Akron Section President*

***P.S. Please remember to keep your membership information current on line – when changing employers, email address, street address, etc. – so you are sure to receive all SPE-related information in a timely manner.***

## John Campbell Biography of Speaker

Ranger Automation Systems, Inc.

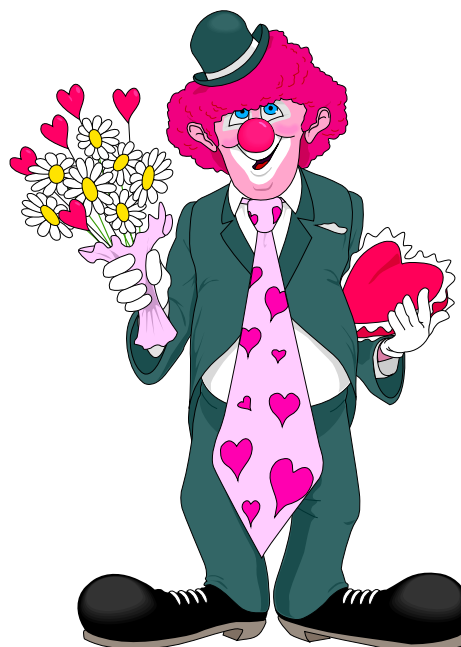
### Biography:

I hold a Bachelors degree in Chemical Engineering and Masters in Business, and have been involved with the plastics and chemical process industries for over 28 years. My background includes positions with DuPont and Application Engineering Corp. (AEC) as project engineer and market manager in the areas of process heating & cooling, material handling, reclaim and factory automation. Currently, I manage sales and application engineering for Ranger Automation Systems, a US manufacturer of parts handling robots and automation cells for injection molding, blow-molding and extrusion operations, serving local Ohio molders including Mar-Bal, Netshape and DK Manufacturing, as well as multi-national corporations such as 3M Company, Valeo Sylvania and Velcro.



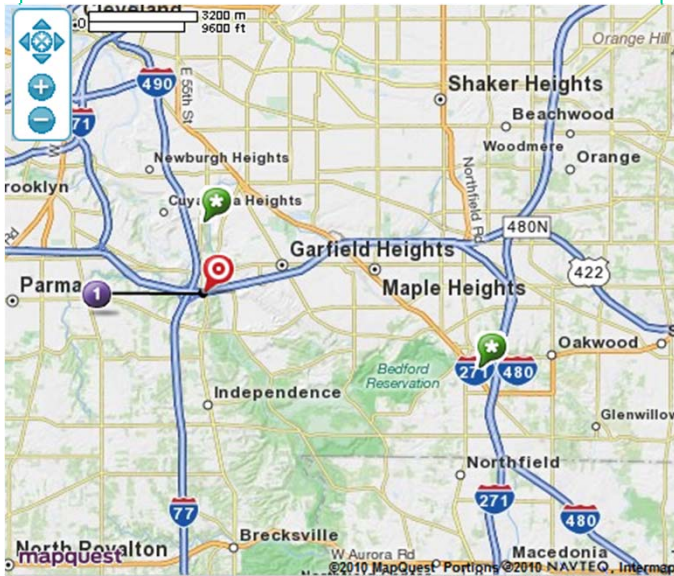
Contact info:

Phone: 508-878-4683; Email:  
[johncampbell@rangerautomation.com](mailto:johncampbell@rangerautomation.com)



**Map to Harry's Steakhouse  
5664 Brecksville Road  
Independence, Ohio 44131**

*You may zoom in*



**In-Mold Decorating Solutions for  
Custom Molders**

In-mold decorating (IMD), also called in-mold labeling (IML), is often associated with dedicated, hi-volume molding applications such as food containers or media packaging. But the process can also be applied successfully to shorter-run custom-molded parts. The presentation will explore the benefits of IMD for custom molders and processors, including:

- Improved product quality and added value for the customer
- Enhanced consumer safety with reduced liability
- Reduced costs for the molder
- Upgraded technical capabilities to differentiate your company
- Expanded markets for existing products

In addition, the presentation will use installation examples and part samples to show how IMD can be implemented cost-effectively, sometimes through retro-fitting of existing equipment

**2012 TOPCON**

Planning for the September 10-12 2012 TPE TOPCON is progressing on schedule. We will need about 90 full registrations to break even and will be working hard to get more than the estimated 240 attendees. Neighboring SPE sections have been contacted to promote the TOPCON in their Newsletters and a number of websites are advertising the TOPCON. SPE Plastics Engineering will carry an ad for the TOPCON in the November and December issues, and SPE has sent out e-mail blasts with a Call for Papers to the total SPE membership in November and December and will have one more in January. Paper abstracts have to be received by January 31. The abstract must include the author(s), company, title and a brief one paragraph description of the paper content. At this time six companies have said they will submit abstracts by the deadline. We would like to receive about 30 abstracts which should provide the 26 reviewed papers for the technical program which must be finalized in early February, 2012. The Advanced Brochure will then be sent out to selected sections and divisions in March, 2012. We are also aiming for 30 exhibitors and a number of sponsors for the TOPCON. These will include a Gold and Premier sponsor and sponsors for the Monday night Welcome Mixer, Tuesday night Reception and coffee breaks. All sponsors will be well recognized for their contribution to the TOPCON.

If you are in the TPE business, please consider attending and being a sponsor or exhibitor or both and, above all, help promote the TOPCON to associates in your company.

Thanks for your help. Let's make the 2012 TPE TOPCON a great success.

Sincerely,  
Viv Malpass  
Akron Section General Chairman  
2012 TPE TOPCON

